

Estran **RANDOM** ET
200JE469 • 105760841

Mère/Dam



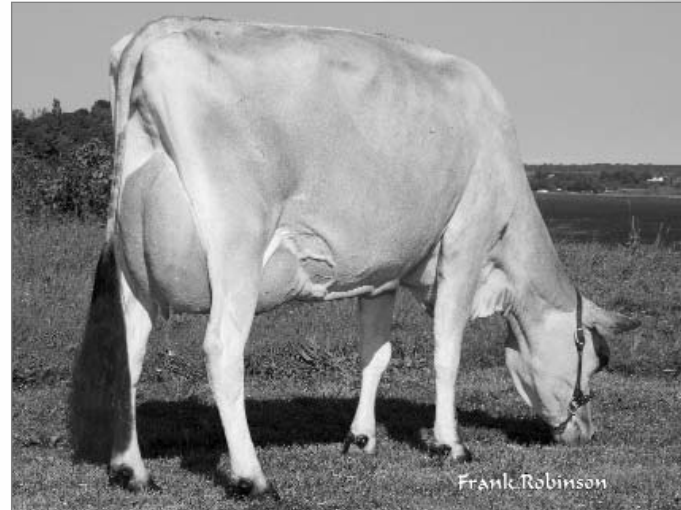
Estran Blackstone Ramone, TB87/VG
3- 305 7435 kg 4,9 % 363 3,9 % 286P (235-211-238)

- RANDOM est un attrayant fils de Legacy qui demeure le premier taureau Canadian selon l'IPV (04/10)
- Sa mère, une fille TB87 de première génération de Lencrest Blackstone est parmi les premières 2 % de la race selon son IPV et provient d'une fille de première génération de Senior classifiée TB 87 qui a produit d'impressionnantes lactations tout en vèlant régulièrement
- Son arrière grand-mère, également issue d'un jeune taureau, est classifiée Ex. et elle continue d'ajouter à ses exploits à près de 11 ans

POP

L'avenir dès aujourd'hui

GMM/MGD



L'Estran Senior Nutella, TB87/VG
5- 305 7052 kg 4,9 % 342 3,8 % 266P (218-194-216) proj.

- RANDOM is an attractive son of Legacy, who continues to be the highest-ranked Canadian sire for LPI following the April 2010 genetic evaluations
- His dam, a VG87 first-crop daughter of Lencrest Blackstone is ranked among the top 2% of the breed for LPI and is from a VG87 first-crop Senior daughter that has made impressive records while calving regularly
- The third dam, also the result of a young sire service, is scored Excellent and is adding to her lifetime credits at close to 11

Legacy x Blackstone

WESTGEN
Milner, BC
604-530-1141

GENCOR
THE GENETIC CORPORATION
Guelph, ON
519-821-2150

EASTERN BREEDERS INC.
Kemptville, ON
613-258-5944

CIAO
St-Hyacinthe, QC
450-774-1141

Tomorrow Today

Jersey Canada

ESTRAN RANDOM ET (MALE) 200 JE 469

-105760841- PUREBRED

PA:(04/10) +884M, +56F,+0.20% +39P,+0.08% RPT.52%
CAN-ETA:(04/10) +9(PA) FC,44% RPT,96 RK, +1664(PA) LPI
SCS:+2.79(PA), Inbr.Coeff. +8.81%, R-Value: +15%

DNA CASE #: DC246909
TATTOO: LMB 1W
BORN: January 01, 2009

Breeder: Louis Montambault et Elise Alain, Deschambault, QC
Owner: The Semex Alliance, Guelph, ON



HOLLYLANE LILIBET'S LEGACY -9240969- VG 85 (3-2)

CAN-EBV:(04/10) +348M, +48F,+0.46% +31P,+0.27% RPT.95%
CAN-ETA:(04/10) +7 FC,91% RPT,91 RK, +1746 LPI
SCS:+2.67, Inbr.Coeff. +3.88%, R-Value: +16%
USA:(04/10)-319M +21F 0.19% +9P 0.11% RPT:95
PTAT(04/10)0.70 RPT:84
176 prog class 7 EX, 27 VG, 100 GP, 40 G, 2 F, GP+76%

ROCK ELLA PERIMITER ET -139475- EX 90 (2-7)

CAN-EBV:(04/10) +538M, +46F,+0.28% +41P,+0.31% RPT.99%
CAN-ETA:(04/10) -3 FC,97% RPT,21 RK, +1055 LPI
SCS:+3.03, Inbr.Coeff. +3.11%, R-Value: +18%
USA:(04/10)-238M +17F 0.16% +17P 0.14% RPT:99
PTAT(04/10)0.00 RPT:99
1336 prog class 39 EX, 284 VG, 616 GP, 351 G, 39 F, 7 P, GP+70%

WILLOA LILIBET RENAISSANCE ET -10023771- VG 89 (2-8)

2 3 305 7541 328 4.35 280 3.71(282 229 277) SA
LIFETIME(1LACT 379DAYS) 8491M, 374F,4.40% 326P,3.84%
AVG. BCA:282M, 229F, 277P +3M -7F +6P
CAN-EBV:(04/10) +135M, -6F,-0.20% +6P,+0.01% RPT.73%
CAN-ETA:(04/10) +10 FC,52% RPT,99 RK, +839 LPI
SCS:+2.89, Inbr.Coeff. +3.40%, R-Value: +13%
ALL CANADIAN, SENIOR TWO YR. 2000
1ST SENIOR TWO YEAR OLD, RAWF 2000
RESERVE INTERMEDIATE CHAMPION, RAWF 2000
4TH SENIOR TWO YEAR OLD, WDE 2000
1ST INTERMEDIATE YEARLING, ONTARIO SPRING SHOW 1999

HOLLYLANE RENAISSANCE -138720- EX (4-7)

CAN-EBV:(04/10) -791M, -55F,-0.25% -32P,-0.04% RPT.99%
CAN-ETA:(04/10) +10 FC,95% RPT,98 RK, -88 LPI
SCS:+3.06, Inbr.Coeff. +6.39%, R-Value: +13%
USA:(04/10)-1386M -62F 0.01% -45P 0.02% RPT:97
PTAT(04/10)0.80 RPT:95

WILLOW CREEK LESTER LIL -582901- EX 92-3E (7-3)

LIFETIME(7LACT 2527DAYS) 54870M, 2558F,4.66% 2104P,3.83%
AVG. BCA:217M, 186F, 216P +23M +11F +19P
CAN-EBV:(04/10) +159M, -3F,-0.21% +4P,-0.03% RPT.78%
CAN-ETA:(04/10) +4 FC,56% RPT,64 RK, +256 LPI
SCS:+2.96, Inbr.Coeff. +0.88%, R-Value: +11%

ESTRAN BLACKSTONE RAMONE -102697549- VG 87 (3-8)

2 0 305 5805 316 5.44 226 3.89(233 234 238)
3 7 305 7435 363 4.88 286 3.85(235 211 238)
LIFETIME(2LACT 826DAYS) 16329M, 863F,5.29% 653P,4.00%
AVG. BCA:234M, 223F, 238P +30M +40F +35P
CAN-EBV:(04/10) +694M, +50F,+0.23% +33P,+0.10% RPT.64%
CAN-ETA:(04/10) +10 FC,41% RPT,99 RK, +1382 LPI
SCS:+2.99, Inbr.Coeff. +5.40%, R-Value: +13%

LENCREST BLACKSTONE -ET -102058939- VG 85 (1-0)

CAN-EBV:(04/10) +887M, +49F,+0.08% +43P,+0.14% RPT.94%
CAN-ETA:(04/10) +6 FC,87% RPT,87 RK, +1130 LPI
SCS:+3.13, Inbr.Coeff. +8.69%, R-Value: +13%
USA:(04/10)+328M +31F 0.09% +22P 0.05% RPT:92
PTAT(04/10)1.40 RPT:83
101 prog class 19 VG, 55 GP, 25 G, 2 F, GP+73%

BW PARADE-ET -JEUSAM 665185-

CAN-EBV:(04/10) +854M, +13F,-0.41% +38P,+0.09% RPT.91%
CAN-ETA:(04/10) +1 FC,82% RPT,51 RK, +416 LPI
SCS:+3.11, Inbr.Coeff. -4.45%, R-Value: +10%
USA:(04/10)+468M +11F -0.05% +25P 0.04% RPT:99
PTAT(04/10)0.70 RPT:99

PIEDMONT DECLO BELLE -10209243- EX 94 (5-4)*

LIFETIME(3LACT 1246DAYS) 33673M, 1808F,5.37% 1359P,4.04%
AVG. BCA:327M, 320F, 337P +129M +136F +139P
CAN-EBV:(04/10) +1581M, +86F,+0.13% +67P,+0.13% RPT.87%
CAN-ETA:(04/10) +11 FC,72% RPT,99 RK, +2301 LPI
SCS:+3.09, Inbr.Coeff. +5.89%, R-Value: +15%

L'ESTRAN SENIOR NUTELLA -101290134- VG 87 (4-2)

3 0 290 5627 289 5.14 215 3.82(204 192 205)
3 11 260 5311 293 5.52 200 3.77(175 177 173)
4 10 305 6295 355 5.64 233 3.70(191 197 186)
5 11 265 7052 342 4.85 266 3.77(218 194 216) (Proj)
LIFETIME(4LACT 1173DAYS) 24272M, 1282F,5.28% 915P,3.77%
AVG. BCA:190M, 189F, 188P -13M +8F -12P
CAN-EBV:(04/10) +98M, +26F,+0.31% +10P,+0.09% RPT.69%
CAN-ETA:(04/10) +7 FC,45% RPT,92 RK, +906 LPI
SCS:+2.93, Inbr.Coeff. +5.89%, R-Value: +14%

PINE HAVEN SENIOR -10211025- EX 90 (3-11)

CAN-EBV:(04/10) +380M, +23F,+0.06% +21P,+0.11% RPT.98%
CAN-ETA:(04/10) +5 FC,95% RPT,80 RK, +1026 LPI
SCS:+2.76, Inbr.Coeff. +5.22%, R-Value: +17%
USA:(04/10)-84M +8F 0.07% +4P 0.03% RPT:95
PTAT(04/10)0.40 RPT:91

THERIHOF BELLEVUE DIANA -10204762- EX 90 (8-10)

7 9 230 5109 226 4.42 198 3.88(146 121 149)
9 9 305 5890 286 4.86 232 3.94(171 158 178)
LIFETIME(3LACT 895DAYS) 16452M, 768F,4.67% 656P,3.99%
AVG. BCA:152M, 133F, 159P -52M -47F -42P
PA:(04/10) -593M, +6F,+0.52% -12P,+0.13% RPT.42%
CAN-ETA:(04/10) +1 FC,42% RPT,30 RK, +24(PA) LPI
SCS:+3.13(PA), Inbr.Coeff. +5.96%, R-Value: +11%

Russell G. Gammon

Russell G. Gammon
Executive Secretary
April 27, 2010