

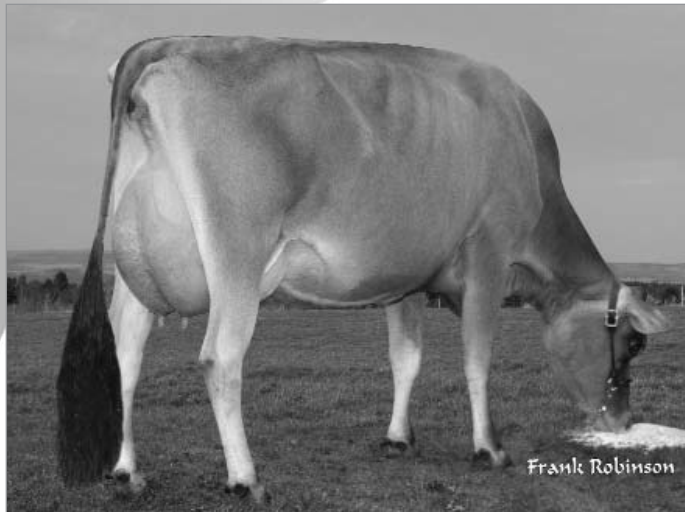


# Lencrest **STEWART**

200JE468 • 104390581

*Lennox x Golden Boy*

Mère/Dam



**Lencrest Gold Belle-ET, TB87-2A/VG-2Y**  
2- 305 9508 kg 5,2 % 495 3,9 % 375P (349-337-364)

Soeur maternelle de/Maternal sister to STEWART



**Lencrest Blair Bella-ET, TB87 1<sup>re</sup> lact./VG 1<sup>st</sup> lact.**  
2- 305 7244 kg 4,9 % 353 3,6 % 260P (271-247-257)

- STEWART rejoint ses frères maternels Cavalia et Glasgow déjà dans le programme des jeunes taureaux de Semex. Son père, Lennox améliore la production, le système mammaire et les pieds et membres
- Sa mère, Gold Belle, occupe le 2<sup>e</sup> rang de la race selon son IPV (01/10) et sa grand-mère, Declo Belle Ex.94-2\*, mère des populaires taureaux éprouvés Blackstone et On Time, est 4<sup>e</sup> de la race selon son IPV
- Parmi les 14 premières vaches de la race au Canada selon l'IPV, on en compte actuellement 10 qui sont issues de cette branche de la famille de renommée internationale, les Duncan Belle

- STEWART joins his older maternal brothers Cavalia and Glasgow in the Semex young sire program. His sire Lennox transmits improvement in milk yield, mammary systems and feet and legs
- His dam, Gold Belle, is the #2-ranked cow for LPI in the breed (01/10) and his grandam, Declo Belle Ex.94-2\*, the dam of the popular proven sires Blackstone and On Time, is ranked #4 in the breed for LPI
- Currently a total of 10 of the top 14 high-ranking cows in the breed for LPI in Canada are from this branch of the internationally-recognized Duncan Belle family

**POP**

*L'avenir dès aujourd'hui*



*Tomorrow Today*

Jersey Canada

**LENCREST STEWART (MALE) 200 JE 468**

**-104390581- PUREBRED**

PA: (01/10) +1297M, +53F, -0.16% +46P, -0.05% RPT.36%  
 CAN-ETA: (01/10) +10(PA) FC, 25% RPT, 98 RK, +1960(PA) LPI  
 SCS: +2.87(PA), Inbr.Coeff. +10.58%, R-Value: +13%

**DNA CASE #:** DC245932  
**TATTOO:**  
**BORN:** January 15, 2009

**Breeder:** Gary & Maureen Bowers, Coaticook, QC  
**Owner:** The Semex Alliance, Guelph, ON



**FOREST GLEN HALLMARK LENNOX-ET -JEUSAM 1119584**

MACE: (01/10) +908M, +19F, -0.38% +29P, -0.08% RPT.75%  
 CAN-ETA: (01/10) +7(MACE) FC, 49% RPT, 91 RK, +1462(MACE) LPI  
 SCS: +2.69(MACE), Inbr.Coeff. +6.80%, R-Value: +11%  
 USA: (01/10) +73M -10F -0.07% -2P -0.02% RPT:91  
 PTAT(01/10) 1.40 RPT:81

**SCHULTZ BROOK HALLMARK -JEUSAM 661148-**

CAN-EBV: (01/10) +1194M, +24F, -0.47% +34P, -0.15% RPT.98%  
 CAN-ETA: (01/10) +5 FC, 93% RPT, 78 RK, +796 LPI  
 SCS: +2.95, Inbr.Coeff. +4.96%, R-Value: +13%  
 USA: (01/10) +553M +7F -0.09% +14P -0.03% RPT:99  
 PTAT(01/10) 0.60 RPT:99  
 306 prog class 20 EX, 85 VG, 143 GP, 56 G, 1 F, 1 P, GP+81%

**AHLEM BERRETTA LILY 5445 -JEUSAF 3915136- EX 90 (3-4)**

2	0	283	6940	351	5.06	275	3.96	(	0	0	0)
2	11	305	7191	350	4.87	299	4.16	(	0	0	0)
4	5	305	12463	606	4.86	475	3.81	(	0	0	0)
6	0	305	10236	466	4.55	400	3.91	(	0	0	0)
7	4	305	6954	307	4.41	295	4.24	(	0	0	0)

LIFETIME(5LACT 1503DAYS) 43784M, 2080F, 4.75% 1744P, 3.98%  
 MACE: (01/10) +448M, +17F, -0.08% +24P, +0.11% RPT.58%  
 CAN-ETA: (01/10) +4(MACE) FC, 33% RPT, 65 RK, +921(MACE) LPI  
 SCS: +2.87(PA), Inbr.Coeff. +3.69%, R-Value: +10%

**MASON BOOMER SOONER BERRETTA -JEUSAM 6518**

CAN-EBV: (01/10) +1239M, +14F, -0.63% +48P, +0.02% RPT.96%  
 CAN-ETA: (01/10) +2 FC, 91% RPT, 58 RK, +839 LPI  
 SCS: +3.11, Inbr.Coeff. +2.44%, R-Value: +14%  
 USA: (01/10) -9M -27F -0.14% +7P 0.04% RPT:99  
 PTAT(01/10) 0.60 RPT:99

**AHLEM GR MAG ROCKY LILY -JEUSAF 3768240- EX 9**

5 1 305 10436 542 5.19 396 3.79 ( 0 0 0)  
 LIFETIME(4LACT 1122DAYS) 32762M, 1676F, 5.12% 1252P, 3.82%  
 MACE: (01/10) +208M, +30F, +0.31% +13P, +0.08% RPT.57%  
 CAN-ETA: (01/10) -4(MACE) FC, 33% RPT, 3 RK, +687(MACE) LPI  
 SCS: +2.63(PA), Inbr.Coeff. +2.72%, R-Value: +6%

**LENCREST GOLD BELLE -ET -101962787- VG 87 (2-9)**

2 6 305 9508 495 5.21 375 3.94(349 337 364) PA  
 4 3 305 9281 447 4.82 362 3.90(273 243 281) SA  
 LIFETIME(2LACT 962DAYS) 25471M, 1298F, 5.10% 1037P, 4.07%  
 AVG. BCA: 311M, 290F, 323P +110M +105F +119P  
 CAN-EBV: (01/10) +1685M, +87F, +0.06% +62P, -0.02% RPT.69%  
 CAN-ETA: (01/10) +12 FC, 52% RPT, 99 RK, +2457 LPI  
 SCS: +3.04, Inbr.Coeff. +10.74%, R-Value: +14%

**GOLDEN BOY OF FERREIRA -JEUSAM 665951-**

CAN-EBV: (01/10) -116M, +16F, +0.32% -2P, +0.03% RPT.95%  
 CAN-ETA: (01/10) +8 FC, 88% RPT, 95 RK, +669 LPI  
 SCS: +2.80, Inbr.Coeff. +6.57%, R-Value: +14%  
 USA: (01/10) -746M +1F 0.20% -19P 0.04% RPT:99  
 PTAT(01/10) 1.80 RPT:99  
 128 prog class 7 EX, 41 VG, 62 GP, 18 G, GP+86%

**WF/L&M DUNCAN BARBER ET -JEUSAM 654500-**

CAN-EBV: (01/10) +1261M, +48F, -0.18% +31P, -0.23% RPT.97%  
 CAN-ETA: (01/10) -3 FC, 89% RPT, 20 RK, +485 LPI  
 SCS: +2.58, Inbr.Coeff. +7.89%, R-Value: +14%  
 USA: (01/10) +40M +7F 0.03% -8P -0.05% RPT:99  
 PTAT(01/10) -0.10 RPT:99

**GOLDEN MBSB OF TWIN HAVEN-ET -JEUSAF 3868233**

LIFETIME(3LACT 813DAYS) 26730M, 1645F, 6.15% 1104P, 4.13%  
 MACE: (01/10) +503M, +24F, -0.01% +22P, +0.04% RPT.75%  
 CAN-ETA: (01/10) +4(MACE) FC, 46% RPT, 65 RK, +725(MACE) LPI  
 SCS: +3.12(PA), Inbr.Coeff. +9.41%, R-Value: +14%

**PIEDMONT DECLO BELLE -10209243- EX 94 (5-4)\***

1	11	305	7816	428	5.48	314	4.02	(312	319	331) PA
3	5	305	9469	534	5.64	367	3.88	(321	330	328) PA
5	3	305	11238	548	4.88	433	3.85	(347	311	352) PA

LIFETIME(3LACT 1246DAYS) 33673M, 1808F, 5.37% 1359P, 4.04%  
 AVG. BCA: 327M, 320F, 337P +129M +136F +139P  
 CAN-EBV: (01/10) +1643M, +93F, +0.16% +70P, +0.14% RPT.86%  
 CAN-ETA: (01/10) +12 FC, 71% RPT, 99 RK, +2297 LPI  
 SCS: +3.12, Inbr.Coeff. +5.64%, R-Value: +14%  
 NOMINATED ALL CANADIAN 5 YR OLD 2005  
 5TH 5 YR OLD, ROYAL WINTER FAIR 2005  
 ALL CANADIAN JUNIOR THREE YEAR OLD 2003  
 HON.MENTION GRAND CHAMPION & INTERMEDIATE CHAMPION RAWF ..

**BARBS MBSB DECLO -JEUSAM 660532-**

CAN-EBV: (01/10) +1363M, +13F, -0.73% +46P, -0.07% RPT.94%  
 CAN-ETA: (01/10) +2 FC, 81% RPT, 58 RK, +642 LPI  
 SCS: +2.88, Inbr.Coeff. +3.70%, R-Value: +12%  
 USA: (01/10) +392M -22F -0.21% +11P -0.01% RPT:99  
 PTAT(01/10) 0.00 RPT:99

**ROCK ELLA BROOK BELLE ET -602088- EX 93 (4-11)\***

3	4	305	8595	444	5.17	351	4.08	(272	260	293) SA
4	5	305	8862	510	5.75	354	3.99	(263	280	277) SA

LIFETIME(4LACT 1324DAYS) 29919M, 1623F, 5.42% 1223P, 4.09%  
 AVG. BCA: 269M, 268F, 292P +26M +61F +43P  
 CAN-EBV: (01/10) -139M, +34F, +0.68% +6P, +0.21% RPT.82%  
 CAN-ETA: (01/10) +8 FC, 64% RPT, 96 RK, +1002 LPI  
 SCS: +3.01, Inbr.Coeff. +4.68%, R-Value: +15%

*Russell G. Gammon*

Russell G. Gammon  
 Executive Secretary  
 February 22, 2010