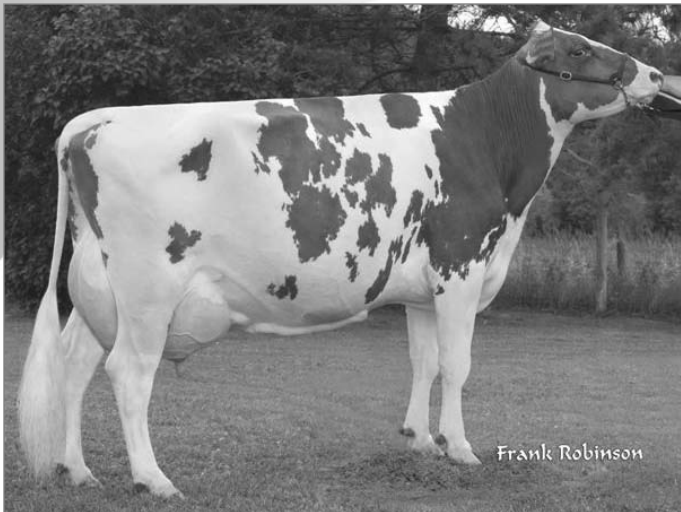


De La Tour **ROCKET**  
200AY706 • 105606373

Mère/Dam



**De La Tour Potter Riki, Ex.91**

4- 305 10 086 kg 4,4 % 441 3,5 % 353P (271-290-289)

- La mère de ROCKET est une fille de première génération de Des Prairies Potter classifiée Ex.91
- Même si sa mère a avorté à 1-8, elle a quand même eu de très bonnes productions en deuxième et troisième lactations
- Le père de ROCKET, Ristourn, est très populaire et il transmet une bonne conformation, des cellules somatiques basses et une durée de vie élevée

**POP**

*L'avenir dès aujourd'hui*

**Ristourn x Potter**

Soeur paternelle de/Paternal sister to ROCKET



**Granbyenne Ristourn Megan, Ex.**

2- 305 7160 kg 4,0 % 285 3,3 % 236P (235-224-236)

- ROCKET's dam is a first-crop daughter of Des Prairies Potter who is scored Ex.91
- Even though his dam aborted at 1-8, she was able to produce very well in second and third lactations
- ROCKET's sire Ristourn has been very popular and is transmitting functional type, low somatic cell count and high herd life

*Tomorrow Today*

MALE  
**DE LA TOUR ROCKET 200 AY 706**  
**-105606373- PUREBRED**

PA: (04/10) +530M/L, +36F/G,+0.21% +23P,+0.07% RPT.36%  
 TYPE:(04/10)CONF +7(PA)(32% RPT) LPI/IPV: +1513(PA) RK/RG: 85%  
 SCS: 2.78(PA), Inbr.C: 3.48%, R.Val: 11%, Dtr Fert: 99(PA)

BT NO./TS NO.:  
 TATTOO:  
 BORN/NÉE: March 18, 2009

Aptitude au vêlage/Calving ease : 101

BREEDER/ÉLEVEUR: Ferme de la Tour, St-Ulric, QC 418-737-9338  
 OWNER/PROP: The Semex Alliance, Guelph, ON 519-821-5060



**LAGACE RISTOURN -101501602- VG 85 (4-0)+ELITE+**

EBV/VEE: (04/10) +654M/L, +32F/G,+0.09% +26P,+0.06% RPT.92%  
 TYPE:(04/10)CONF +8(86% RPT) LPI/IPV: +1582 RK/RG: 87%  
 SCS: 2.75, Inbr.C: 0.00%, R.Val: 8%, Dtr Fert: 98  
 107 prog class 15 VG/TB, 52 GP/BP, 39 G/B, 1 F,  
 GP+/BP+ 63%

**B JURIST -AYSWEM 91011- +ELITE+**

EBV/VEE: (04/10) +1413M/L, +71F/G,+0.20% +67P,+0.25% RPT.96%  
 TYPE:(04/10)CONF +3(94% RPT) LPI/IPV: +2829 RK/RG: 98%  
 SCS: 2.80, Inbr.C: 0.00%, R.Val: 3%, Dtr Fert: 102  
 250 prog class 5 EX, 34 VG/TB, 126 GP/BP, 79 G/B, 6 F,  
 GP+/BP+ 66%

**LAGACE TRIDENT MODULE ET -10024662- VG 87 (4-1)3\***

2	0	305	8736	354	4.1	290	3.3	(304	295	309)	+84	+71	+80
3	1	279	9597	402	4.2	326	3.4	(287	291	296)	+67	+74	+68
4	1	305	8433	299	3.5	278	3.3	(231	199	232)	+19	-4	+15
5	4	292	8892	322	3.6	290	3.3	(238	210	236)	+18	-8	+11

(4 LACT)TOTAL: 36087M/L, 1397F/G,3.87% 1201P,3.33%  
 AVG. BCA/ MCR MOY.:265- 249- 268P +47 +33 +44  
 EBV/VEE: (04/10) +240M/L, +13F/G,+0.06% +5P,-0.05% RPT.67%  
 TYPE:(04/10)CONF +6(59% RPT) LPI/IPV: +681 RK/RG: 65%  
 SCS: 2.75, Inbr.C: 5.41%, R.Val: 13%, Dtr Fert: 98(PA)

**DE LA TOUR POTTER RIKI -103004721- EX 91 (4-7)**

1	8	305	5045	240	4.8	165	3.3	( 0	0	0)			
3	2	305	9414	439	4.7	316	3.4	(279	314	285)	+60	+95	+66
4	1	305	10086	441	4.4	353	3.5	(271	290	289)	+45	+63	+62

(3 LACT)TOTAL: 28021M/L, 1323F/G,4.72% 975P,3.48%  
 AVG. BCA/ MCR MOY.:275- 302- 287P +53 +79 +64  
 EBV/VEE: (04/10) +405M/L, +40F/G,+0.33% +19P,+0.07% RPT.53%  
 TYPE:(04/10)CONF +6(40% RPT) LPI/IPV: +1443 RK/RG: 94%  
 SCS: 2.80, Inbr.C: 7.62%, R.Val: 13%, Dtr Fert: 100(PA)

**DES PRAIRIES POTTER -100512296- VG 86 (1-11)**

EBV/VEE: (04/10) -59M/L, +20F/G,+0.32% +1P,+0.04% RPT.87%  
 TYPE:(04/10)CONF +10(79% RPT) LPI/IPV: +1084 RK/RG: 70%  
 SCS: 2.77, Inbr.C: 9.84%, R.Val: 16%, Dtr Fert: 99  
 59 prog class 1 EX, 10 VG/TB, 31 GP/BP, 14 G/B, 3 F,  
 GP+/BP+ 71%

**DE LA TOUR ATTRACTION JOJO -10310253- VG 85 (6-5)2**

2	0	305	6805	291	4.3	245	3.6	(228	233	250)	+34	+38	+47
3	2	305	8404	354	4.2	277	3.3	(238	244	239)	+43	+54	+42
4	3	305	8980	392	4.4	306	3.4	(233	250	241)	+37	+54	+45
5	4	296	8686	358	4.1	297	3.4	(217	221	225)	+12	+14	+16
6	4	292	10315	404	3.9	340	3.3	(253	245	254)	+43	+41	+42
7	3	305	9353	376	4.0	311	3.3	(227	227	230)	+12	+18	+19

(6 LACT)TOTAL: 53887M/L, 2249F/G,4.17% 1831P,3.40%  
 AVG. BCA/ MCR MOY.:233- 237- 240P +30 +37 +35  
 EBV/VEE: (04/10) +158M/L, +26F/G,+0.29% +12P,+0.09% RPT.59%  
 TYPE:(04/10)CONF -3(43% RPT) LPI/IPV: +795 RK/RG: 73%  
 SCS: 2.75, Inbr.C: 3.53%, R.Val: 10%, Dtr Fert: 101(PA)

**ARDROSSAN EV KATES TRIDENT -AYUSAM 144136- +ELI**

EBV/VEE: (04/10) +253M/L, +21F/G,+0.15% +34P,+0.08% RPT.98%  
 TYPE:(04/10)CONF +8(95% RPT) LPI/IPV: +789 RK/RG: 54%  
 SCS: 3.14, Inbr.C: 3.50%, R.Val: 12%, Dtr Fert: 95

**LAGACE HELIGO MODE 27 -801372- EX 90 (5-7)7\***

(7 LACT)TOTAL: 76912M/L, 3476F/G,4.52% 2686P,3.49%  
 AVG. BCA/ MCR MOY.:258- 281- 267P +38 +62 +40  
 EBV/VEE: (04/10) +59M/L, +11F/G,+0.16% +0P,+0.00% RPT.81%  
 TYPE:(04/10)CONF +0(69% RPT) LPI/IPV: +472 RK/RG: 51%  
 SCS: 2.60, Inbr.C: 4.82%, R.Val: 14%, Dtr Fert: 100(PA)

**KILDARE JERRY ET -10002432- G 77 (2-3)+ELITE+**

EBV/VEE: (04/10) +191M/L, +36F/G,+0.40% +17P,+0.14% RPT.99%  
 TYPE:(04/10)CONF +6(98% RPT) LPI/IPV: +1588 RK/RG: 87%  
 SCS: 2.50, Inbr.C: 3.62%, R.Val: 18%, Dtr Fert: 101

**DES PRAIRIES PRUDAM -10307109- EX 91-3E (10-4)6\***

(6 LACT)TOTAL: 80919M/L, 3467F/G,4.28% 2727P,3.37%  
 AVG. BCA/ MCR MOY.:313- 322- 314P +75 +80 +66  
 EBV/VEE: (04/10) +690M/L, +37F/G,+0.17% +21P,-0.01% RPT.81%  
 TYPE:(04/10)CONF +12(67% RPT) LPI/IPV: +1443 RK/RG: 94%  
 SCS: 3.13, Inbr.C: 4.08%, R.Val: 15%, Dtr Fert: 100(PA)  
**PROULX ATTRACTION ET -722664- EX 90 (5-1)**  
 EBV/VEE: (04/10) -870M/L, -17F/G,+0.26% -17P,+0.18% RPT.90%  
 TYPE:(04/10)CONF -4(73% RPT) LPI/IPV: -346 RK/RG: 4%  
 SCS: 2.73, Inbr.C: 2.98%, R.Val: 7%, Dtr Fert: 101(PA)

**DE LA TOUR HELIGO GIGI -10019825- G 76 (2-2)**

(4 LACT)TOTAL: 25941M/L, 1144F/G,4.41% 913P,3.52%  
 AVG. BCA/ MCR MOY.:210- 228- 226P +34 +51 +41  
 EBV/VEE: (04/10) +134M/L, +25F/G,+0.28% +5P,-0.01% RPT.61%  
 TYPE:(04/10)CONF -6(46% RPT) LPI/IPV: +186 RK/RG: 31%  
 SCS: 2.79, Inbr.C: 6.92%, R.Val: 13%, Dtr Fert: 101(PA)

Linda Ness  
 Executive Secretary  
 April 27, 2010