

Palmyra **BINGO**-ET
200AY697 • 104295176

Mère/Dam

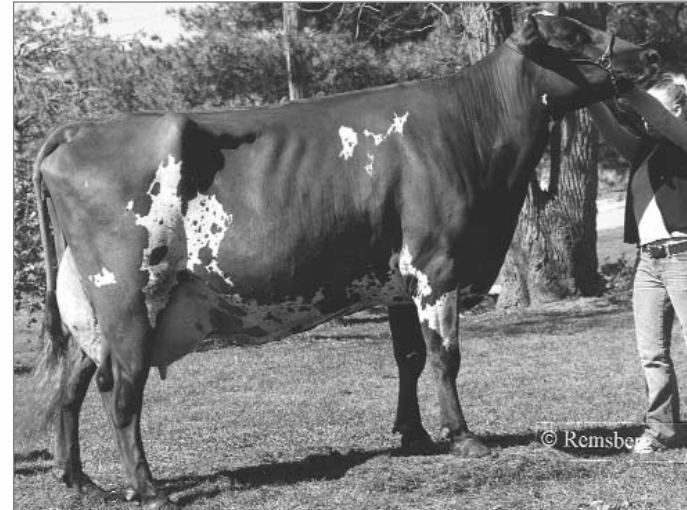


Palmyra Jerry Bethany-ET, Ex.USA

3- 305 14 456 kg 4,2 % 606 3,3 % 475P

- Palmyra Jerry Bethany, la mère de BINGO, est parmi les meilleures vaches aux É.-U. selon le CTPI et elle est la sœur propre de 200 AY 922 Palmyra Jerry Bendig
- BINGO est issu d'une des meilleures familles de vaches aux É.-U. dont plusieurs filles ont des productions élevées et de bons résultats aux expositions
- On s'attend à ce que BINGO engendre une progéniture stylée et complémente bien les filles de B-Jurist, de Calimero, d'Hector et de Ristourn

GMM/MGD



Palmyra Reno Bethany-ET, Ex.USA

4- 365 16 230 kg 3,8 % 623 3,1 % 509P

Mention Honorable All-American 2 ans jr. 2001

- Palmyra Jerry Bethany, the dam of BINGO, is one of the top rated cows in USA and is a full sister to 200 AY 922 Palmyra Jerry Bendig
- BINGO is from one of the strongest cow families in the USA, with many progeny having high-production records and top show results
- BINGO is expected to sire stylist progeny and would work well on daughters of B-Jurist, Calimero, Hector and Ristourn

Poker x Jerry



POP

L'avenir dès aujourd'hui

Tomorrow Today

AYRSHIRE CANADA

MALE
PALMYRA BINGO -ET 200 AY 697

-104295176- PUREBRED

BT NO./TS NO.:
TATTOO:
BORN/NÉE: **October 24, 2008**

BREEDER/ÉLEVEUR: **Palmyra Farm, Hagerstown, MD USA 301 733 9255**
OWNER/PROP: **The Semex Alliance, Guelph, ON 519-821-5060**

PA: (04/10) +966M/L, +46F/G, +0.10% +35P, +0.04% RPT.36%
TYPE: (04/10) CONF +11(PA) (32% RPT) LPI/IPV: +1995(PA) RK/RG: 94%
SCS: 2.77(PA), Inbr.C: 6.44%, R.Val: 17%, Dtr Fert: 98(PA)



DES CHAMOIS POKER -ET -8401621- VG 86 (2-0)+ELITE+

EBV/VEE: (04/10) +650M/L, +39F/G, +0.18% +23P, +0.02% RPT.92%
TYPE: (04/10) CONF +14(87% RPT) LPI/IPV: +1856 RK/RG: 92%
SCS: 2.79, Inbr.C: 7.60%, R.Val: 18%, Dtr Fert: 95
140 prog class 4 EX, 29 VG/TB, 76 GP/BP, 30 G/B, 1 F,
GP+/BP+ 78%

WOODLAND VIEW PARDNER ET -811799- EX 96-2E (5-11)

EBV/VEE: (04/10) +609M/L, +33F/G, +0.12% +16P, -0.05% RPT.99%
TYPE: (04/10) CONF +4(98% RPT) LPI/IPV: +1057 RK/RG: 66%
SCS: 2.79, Inbr.C: 5.29%, R.Val: 21%, Dtr Fert: 99
2004 prog class 31 EX, 350 VG/TB, 870 GP/BP, 644 G/B,
94 F, 15 P, GP+/BP+ 62%

PALMYRA JERRY BETHANY-ET -AYUSAF 100323122-

2 0 0 10401 411 4.0 346 3.3 (0 0 0)
(1 LACT) TOTAL: 10401M/L, 411F/G, 3.95% 346P, 3.33%
MACE: (04/10) +1282M/L, +52F/G, +0.01% +47P, +0.05% RPT.50%
TYPE: (04/10) CONF +7(MACE) (41% RPT) LPI/IPV: +2133(MACE) RK/RG..
SCS: 2.75(MACE), Inbr.C: 4.82%, R.Val: 15%, Dtr Fert: 101(PA)

Mise à jour/Update :

Ex.90 USA

3-5 305 14 456 kg 4,2 % 606 3,3 % 475P

Linda Ness
Executive Secretary
May 27, 2010

MARILIE B B POLKIE ET -10014952- EX 95-5E (11-2)3*

2 2 305 8355 362 4.3 303 3.6 (272 283 300) +34 +41 +54
3 5 305 10135 424 4.2 358 3.5 (283 288 303) +49 +46 +58
4 8 305 9101 382 4.2 313 3.4 (237 243 246) +17 +29 +27
5 8 305 10452 404 3.9 354 3.4 (267 253 274) +38 +36 +47
8 5 305 12358 598 4.8 402 3.3 (296 358 291)
10 8 305 9584 419 4.4 330 3.4 (248 270 260) +3 +4 +9
(6 LACT) TOTAL: 70861M/L, 3121F/G, 4.40% 2519P, 3.55%
AVG. BCA/ MCR MOY.: 267- 283- 279P +24 +26 +33
EBV/VEE: (04/10) +143M/L, +11F/G, +0.10% +11P, +0.12% RPT.79%
TYPE: (04/10) CONF +13(63% RPT) LPI/IPV: +948 RK/RG: 80%
SCS: 3.21, Inbr.C: 4.20%, R.Val: 14%, Dtr Fert: 97(PA)
RESERVE TOUTE CANADIENNE 2006
RESERVE GRAND CHAMPION & RESERVE SENIOR CHAMPION , ROYAL 2006
GRAND CHAMPION, ST-HYACINTHE 2006

KILDARE JERRY ET -10002432- G 77 (2-3)+ELITE+

EBV/VEE: (04/10) +191M/L, +36F/G, +0.40% +17P, +0.14% RPT.99%
TYPE: (04/10) CONF +6(98% RPT) LPI/IPV: +1588 RK/RG: 87%
SCS: 2.50, Inbr.C: 3.62%, R.Val: 18%, Dtr Fert: 101
950 prog class 13 EX, 140 VG/TB, 422 GP/BP, 343 G/B,
28 F, 4 P, GP+/BP+ 61%

PALMYRA RENO BETHANY -ET -AYUSAF 100101191-

3 1 305 12206 435 3.6 397 3.3 (0 0 0)
(1 LACT) TOTAL: 14030M/L, 501F/G, 3.57% 483P, 3.44%
MACE: (04/10) +1103M/L, +28F/G, -0.21% +34P, -0.04% RPT.65%
TYPE: (04/10) CONF +7(MACE) (52% RPT) LPI/IPV: +1435(MACE) RK/RG..
SCS: 2.98(MACE), Inbr.C: 7.40%, R.Val: 12%, Dtr Fert: 101(PA)

Mise à jour/Update :

Ex.90 USA

1-11 305 10 297 kg 3,8 % 393 3,1 % 318P

4- 8 305 14 479 kg 3,9 % 559 3,1 % 445

BLACKADDAR B B KELLOGG -777850- EX 90 (3-4)+ELITE+

EBV/VEE: (04/10) -477M/L, -25F/G, -0.10% -6P, +0.14% RPT.99%
TYPE: (04/10) CONF +13(97% RPT) LPI/IPV: +372 RK/RG: 33%
SCS: 3.23, Inbr.C: 3.70%, R.Val: 17%, Dtr Fert: 95

ST OURS POLIE ET -759422- VG 85 (6-9)2*

5 10 305 6927 329 4.7 245 3.5 (171 201 184) -8 +32 +1
(5 LACT) TOTAL: 32891M/L, 1516F/G, 4.61% 1209P, 3.68%
EBV/VEE: (04/10) -612M/L, -7F/G, +0.32% -13P, +0.15% RPT.69%
TYPE: (04/10) CONF +0(52% RPT) LPI/IPV: -264 RK/RG: 9%
SCS: 3.06, Inbr.C: 3.89%, R.Val: 11%, Dtr Fert: 99(PA)

BLACKADDAR M M PATRICK -769262- VG 85 (2-1)+ELITE+

EBV/VEE: (04/10) +289M/L, +9F/G, -0.02% +19P, +0.13% RPT.98%
TYPE: (04/10) CONF +4(95% RPT) LPI/IPV: +534 RK/RG: 43%
SCS: 2.80, Inbr.C: 4.85%, R.Val: 18%, Dtr Fert: 93

KILDARE HELIGO XANTE -744933- EX 90 (7-1)14*

6 8 305 10139 460 4.5 348 3.4 (243 274 254) +61 +91 +65
(5 LACT) TOTAL: 52524M/L, 2426F/G, 4.62% 1902P, 3.62%
EBV/VEE: (04/10) +315M/L, +24F/G, +0.17% +12P, +0.03% RPT.88%
TYPE: (04/10) CONF +0(77% RPT) LPI/IPV: +1260 RK/RG: 90%
SCS: 2.49, Inbr.C: 3.97%, R.Val: 14%, Dtr Fert: 100(PA)

COVEY-FARMS RENO -AYUSAM 145522-

EBV/VEE: (04/10) +776M/L, -8F/G, -0.52% +12P, -0.19% RPT.98%
TYPE: (04/10) CONF +5(93% RPT) LPI/IPV: +246 RK/RG: 24%
SCS: 3.14, Inbr.C: 6.83%, R.Val: 13%, Dtr Fert: 101

PALMYRA C. BLUSH -AYUSAF 984537-

5 10 305 12383 494 4.0 444 3.6 (0 0 0)
(5 LACT) TOTAL: 57738M/L, 2386F/G, 4.13% 2045P, 3.54%
MACE: (04/10) +1275M/L, +55F/G, +0.05% +46P, +0.04% RPT.64%
TYPE: (04/10) CONF -6(PA) (23% RPT) LPI/IPV: +1410(PA) RK/RG: 93%
SCS: 2.78(MACE), Inbr.C: 3.78%, R.Val: 10%, Dtr Fert: 100(PA)