

Glen Malcolm **DREAMMAKER**
200AY342 • 9845506

Poker x Conn

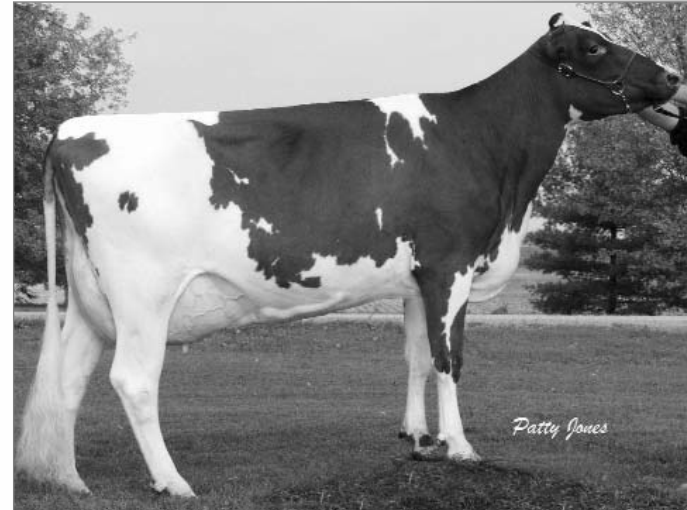
Mère/Dam



Glen Malcolm Conn's Zora-ET, TB89/VG
3- 305 9120 kg 4,1 % 373 3,5 % 321P (256-254-274)

- DREAMMAKER, un fils de Poker, provient d'une généalogie canadienne où nous retrouvons les taureaux Conn, Romeo et Marathon dans sa lignée maternelle
- Ses trois mères directes sont classifiées TB ou Ex. et ont toutes des lactations de plus de 9 000 kg
- On s'attend à ce que DREAMMAKER améliore les composants et la puissance laitière

GMM/MGD



Creek Home Zora 5, Ex.-5*
2- 304 8915 kg 4,6 % 411 3,5 % 316P (288-319-310)

- DREAMMAKER, a Poker son, is from a Canadian pedigree where we find sires such as Conn, Romeo and Marathon is his maternal line
- His three direct dams all are scored VG or Ex. and all have lactations over 9,000 kg of milk
- DREAMMAKER is expected to be a component improver and should sire dairy strength



POP

L'avenir dès aujourd'hui

Tomorrow Today

MALE

GLEN MALCOLM DREAMMAKER 200 AY 342

-9845506- PUREBRED

BT NO./TS NO.:

TATTOO:

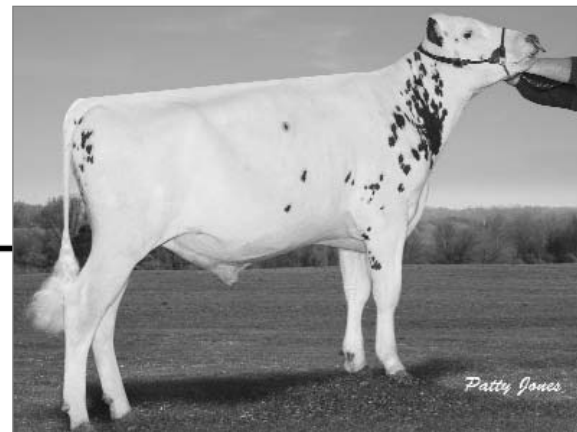
BORN/NÉE:

December 07, 2008

Aptitude au vêlage/Calving ease : 99

BREEDER/ÉLEVEUR: Mac Naughton Cumming & Sons, Lancaster, ON 613-347-3423 (FARM)

OWNER/PROP: The Semex Alliance, Guelph, ON 519-821-5060



DES CHAMOIS POKER -ET -8401621- VG 86 (2-0)+ELITE+

EBV/VEE: (04/10) +650M/L, +39F/G,+0.18% +23P,+0.02% RPT.92%
 TYPE:(04/10)CONF +14(87% RPT) LPI/IPV: +1856 RK/RG: 92%
 SCS: 2.79, Inbr.C: 7.60%, R.Val: 18%, Dtr Fert: 95
 117 prog class 4 EX, 27 VG/TB, 58 GP/BP, 27 G/B, 1 F,
 GP+/BP+ 76%

WOODLAND VIEW PARDNER ET -811799- EX 96-2E (5-11)

EBV/VEE: (04/10) +609M/L, +33F/G,+0.12% +16P,-0.05% RPT.99%
 TYPE:(04/10)CONF +4(98% RPT) LPI/IPV: +1057 RK/RG: 66%
 SCS: 2.79, Inbr.C: 5.29%, R.Val: 21%, Dtr Fert: 99
 1987 prog class 30 EX, 348 VG/TB, 861 GP/BP, 639 G/B,
 94 F, 15 P, GP+/BP+ 62%

MARILIE B B POLKIE ET -10014952- EX 95-5E (11-2)3*

2 2 305 8355 362 4.3 303 3.6 (272 283 300) +34 +41 +54
 3 5 305 10135 424 4.2 358 3.5 (283 288 303) +49 +46 +58
 4 8 305 9101 382 4.2 313 3.4 (237 243 246) +17 +29 +27
 5 8 305 10452 404 3.9 354 3.4 (267 253 274) +38 +36 +47
 8 5 305 12358 598 4.8 402 3.3 (296 358 291)
 10 8 305 9584 419 4.4 330 3.4 (248 270 260) +3 +4 +9
 (6 LACT)TOTAL: 70861M/L, 3121F/G,4.40% 2519P,3.55%
 AVG. BCA/ MCR MOY.:267- 283- 279P +24 +26 +33
 EBV/VEE: (04/10) +143M/L, +11F/G,+0.10% +11P,+0.12% RPT.79%
 TYPE:(04/10)CONF +13(63% RPT) LPI/IPV: +948 RK/RG: 80%
 SCS: 3.21, Inbr.C: 4.20%, R.Val: 14%, Dtr Fert: 97(PA)
 RESERVE TOUTE CANADIENNE 2006
 RESERVE GRAND CHAMPION & RESERVE SENIOR CHAMPION , ROYAL 2006
 GRAND CHAMPION, ST-HYACINTHE 2006

GLEN MALCOLM CONN'S ZORA -ET -7799074- VG 89 (3-6)

2 3 297 7234 296 4.1 251 3.5 (231 226 244) +27 +31 +32
 3 3 305 9120 373 4.1 321 3.5 (256 254 274) +50 +57 +54
 (2 LACT)TOTAL: 17225M/L, 710F/G,4.12% 610P,3.54%
 AVG. BCA/ MCR MOY.:244- 240- 259P +39 +44 +43
 EBV/VEE: (04/10) +723M/L, +46F/G,+0.24% +30P,+0.08% RPT.58%
 TYPE:(04/10)CONF +5(49% RPT) LPI/IPV: +1348 RK/RG: 92%
 SCS: 2.90, Inbr.C: 6.33%, R.Val: 15%, Dtr Fert: 99(PA)

SHADY WALNUT CONN -10304939- EX 90 (3-9)

EBV/VEE: (04/10) +382M/L, +40F/G,+0.35% +16P,+0.04% RPT.98%
 TYPE:(04/10)CONF +4(97% RPT) LPI/IPV: +884 RK/RG: 59%
 SCS: 3.05, Inbr.C: 5.60%, R.Val: 16%, Dtr Fert: 98
 792 prog class 4 EX, 106 VG/TB, 401 GP/BP, 262 G/B,
 18 F, 1 P, GP+/BP+ 65%

CREEK HOME ZORA 5 -10307622- EX 90 (5-5)5*

2 5 304 8915 411 4.6 316 3.5 (288 319 310) +75 +117 +92
 3 4 305 9167 392 4.3 323 3.5 (261 270 278) +53 +69 +66
 4 8 305 8804 378 4.3 311 3.5 (239 250 257) +39 +58 +53
 6 3 305 8663 357 4.1 288 3.3 (212 216 215) +7 +14 +6
 7 6 305 9690 381 3.9 318 3.3 (243 237 243) +37 +36 +31
 8 8 305 8494 331 3.9 289 3.4 (222 215 229) +17 +22 +17
 (6 LACT)TOTAL: 63174M/L, 2702F/G,4.28% 2232P,3.53%
 AVG. BCA/ MCR MOY.:244- 251- 255P +38 +53 +44
 EBV/VEE: (04/10) +880M/L, +42F/G,+0.11% +31P,+0.04% RPT.80%
 TYPE:(04/10)CONF +3(67% RPT) LPI/IPV: +1377 RK/RG: 93%
 SCS: 2.76, Inbr.C: 5.18%, R.Val: 14%, Dtr Fert: 99(PA)

BLACKADDAR B B KELLOGG -777850- EX 90 (3-4)+ELITE+

EBV/VEE: (04/10) -477M/L, -25F/G,-0.10% -6P,+0.14% RPT.99%
 TYPE:(04/10)CONF +13(97% RPT) LPI/IPV: +372 RK/RG: 33%
 SCS: 3.23, Inbr.C: 3.70%, R.Val: 17%, Dtr Fert: 95

ST OURS POLIE ET -759422- VG 85 (6-9)2*

5 10 305 6927 329 4.7 245 3.5 (171 201 184) -8 +32 +1
 (5 LACT)TOTAL: 32891M/L, 1516F/G,4.61% 1209P,3.68%
 EBV/VEE: (04/10) -612M/L, -7F/G,+0.32% -13P,+0.15% RPT.69%
 TYPE:(04/10)CONF +0(52% RPT) LPI/IPV: -264 RK/RG: 9%
 SCS: 3.06, Inbr.C: 3.89%, R.Val: 11%, Dtr Fert: 99(PA)

WILHAVEN COREY -790322- EX 90 (3-7)+ELITE+

EBV/VEE: (04/10) -282M/L, +0F/G,+0.16% -11P,-0.03% RPT.97%
 TYPE:(04/10)CONF +0(91% RPT) LPI/IPV: -451 RK/RG: 3%
 SCS: 3.05, Inbr.C: 5.31%, R.Val: 16%, Dtr Fert: 97

SHADY WALNUT CONSTANCE -810625- VG 87 (2-8)4*

(4 LACT)TOTAL: 37233M/L, 1509F/G,4.05% 1244P,3.34%
 AVG. BCA/ MCR MOY.:221- 214- 218P +18 +27 +15
 EBV/VEE: (04/10) +624M/L, +37F/G,+0.18% +21P,+0.02% RPT.79%
 TYPE:(04/10)CONF +5(55% RPT) LPI/IPV: +1322 RK/RG: 92%
 SCS: 3.01, Inbr.C: 5.45%, R.Val: 14%, Dtr Fert: 103(PA)

COVEY-FARMS ROMEO-ET -10023892- VG 85 (1-0)

EBV/VEE: (04/10) +461M/L, +4F/G,-0.20% +12P,-0.05% RPT.98%
 TYPE:(04/10)CONF +3(97% RPT) LPI/IPV: +441 RK/RG: 39%
 SCS: 2.97, Inbr.C: 3.44%, R.Val: 16%, Dtr Fert: 95

CREEK HOME RED -10011879- VG 85 (12-0)3*

(9 LACT)TOTAL: 109246M/L, 3910F/G,3.58% 3581P,3.28%
 AVG. BCA/ MCR MOY.:291- 254- 285P +50 +33 +47
 EBV/VEE: (04/10) +1146M/L, +35F/G,-0.16% +32P,-0.10% RPT.69%
 TYPE:(04/10)CONF -2(52% RPT) LPI/IPV: +1062 RK/RG: 84%
 SCS: 2.85, Inbr.C: 6.06%, R.Val: 11%, Dtr Fert: 103(PA)

Linda Ness
 Executive Secretary
 April 27, 2010