

Voici...

JOURNEYMAN

(Wilton x Jolly)

Série Designer

200AY00106
Yellow Briar Journeyman



Né le : 19 novembre 2004

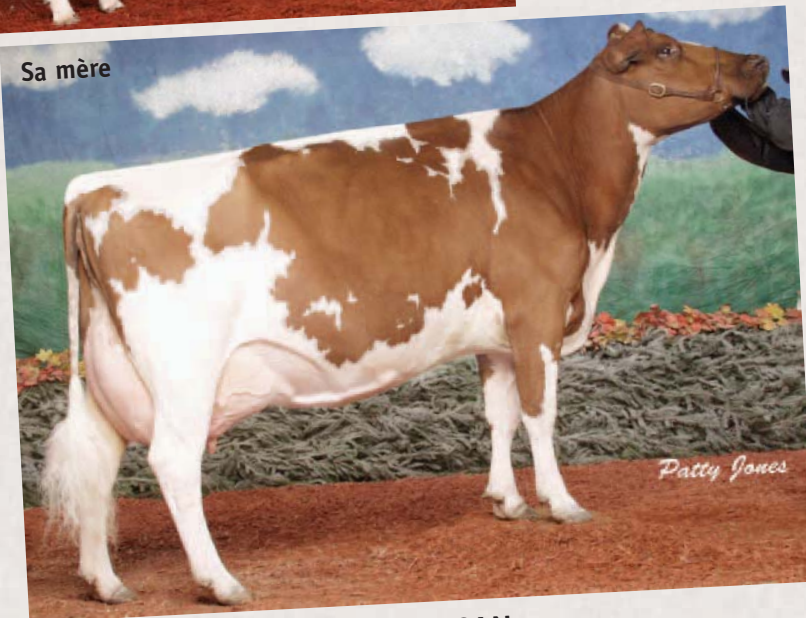
N° enr. : CANM7602570

Père : Labrie
Wilton



Non admissible
aux mesures
incitatives
du programme
d'épreuves

Sa mère



Yellow Briar Jolly EX-93-6A-CAN

2-10	305	8 236	4.0 %	329	3.5 %	287	kg
4-10	305	8 761	3.9 %	338	3.4 %	296	kg
6-07	305	10 744	3.8 %	408	3.3 %	356	kg proj.

Grande Championne World Dairy Expo 2001

Grande Championne Royal Winter Fair 2001

All-Canadian 1999, 2000 & 2001

Grande Champ. Western Ontario Championship Show 2001 & 2003

All-Ontario de réserve & Nom. All-Canadian 4 ans 2003

SEMEX
ALLIANCE

130 Stone Road West
Guelph, Ontario N1G 3Z2
Tél. : (519) 821-5060
Télé. : (519) 821-7225
www.semex.com info@semex.com

3450, rue Sicotte, C.P. 518,
Saint-Hyacinthe, Québec
Canada J2S 7B8
Tél. : (450) 774-1141
Télé. : (450) 774-9318
www.ciaq.com ciaq@ciaq.com

CIAQ

MALEMALE

YELLOW BRIAR JOURNEYMAN
-7602570-

BT NO./TS NO.:
TATTOO:
BORN/NÉE: DUV 26P
November 19, 2004

BREEDER/ÉLEVEUR: Jeffrey & Marilyn Stephens, Troy ON 519-647-2323
OWNER/PROPR.: The Semex Alliance, Guelph, ON 519-821-5060

AYRSHIRE CANADA

LABRIE WILTON -ET-10304106-VG 85(1-7)
EBV/VBE: (12/05) +351M/L, +4E/G, -0.14% +22P, +0.15% RPT, 92%
TYPE: (12/05)CONF+14(83% RPT) LPI/IPV: +857 RK/RG:56%
SCS:3.18, Inbr.C:3.58%, R.Val:14%, Dtr Fert:52
86 prog class 4 EX, 14 VG/TB, 41 GP/BB, 24 G/B, 2 F,
1 P, GP+/BP+ 69%

BLACKKADDAR B B KELLOGG-777850-EX 90(3-4)+ELITE+
EBV/VBE: (12/05) -88M/L, -10F/G, -0.10% +7P, +0.15% RPT, 99%
TYPE: (12/05)CONF+17(98% RPT) LPI/IPV: +1238 RK/RG:77%
SCS:3.19, Inbr.C:3.73%, R.Val:15%, Dtr Fert:58
1102 prog class 141 EX, 442 VG/TB, 419 GP/BB, 90 G/B
6 F, 4 P, GP+/BP+ 91%

BONNIE BRAE KELLOGG-66235-EX 91(3-6)
EBV/VBE: (12/05) -109M/L, -46F/G, -0.06% -32P, +0.08% RPT, 98%
TYPE: (12/05)CONF +8(97% RPT) LPI/IPV: -124 RK/RG:4%
SCS:2.94, Inbr.C:0.98%, R.Val:11%, Dtr Fert:58

BLACKKADDAR MILKY MODEL -727084-EX 90(6-9)3*
7 4 305 10838 475 4.4 345 3.2(274 293 265) +81 +91 +73
(7 LACT)TOTAL: 80202M/L, 3271F/G, 4.08% 2600P, 3.24%
AVG. BCA/MCR MOY.: 253-250-244P, +49 +43 +39
EBV/VBE: (12/05) +682M/L, +10F/G, -0.22% +18P, -0.05% RPT, 79%
TYPE: (12/05)CONF +5(70% RPT) LPI/IPV: +729 RK/RG:63%
SCS:3.25, Inbr.C:2.73%, R.Val:15%

VEUX VILLAGE JEANNOT-713675-VG 88(2-0)
EBV/VBE: (12/05) -974M/L, -34F/G, +0.07% -24P, +0.13% RPT, 97%
TYPE: (12/05)CONF -5(94% RPT) LPI/IPV: -1305 RK/RG:0%
SCS:2.82, Inbr.C:12.30%, R.Val:15%

LABRIE JOHNNY SHELA 17S-1122801C-GP 80(2-9)
6 4 305 9809 397 4.0 349 3.6(240 237 259) +20 +21 +30
(4 LACT)TOTAL: 32051M/L, 1353F/G, 4.22% 1184P, 3.69%
AVG. BCA/MCR MOY.: 203-208-227P, +10 +11 +26
EBV/VBE: (12/05) +303M/L, +7F/G, -0.05% +9P, +0.04% RPT, 72%
TYPE: (12/05)CONF -2(47% RPT) LPI/IPV: -103 RK/RG:10%
SCS:3.30, Inbr.C:1.95%, R.Val:15%

BLACKKADDAR ISLE MILKMAN-693744-EX+ELITE+
EBV/VBE: (12/05) -148M/L, -4E/G, +0.03% -1P, +0.06% RPT, 99%
TYPE: (12/05)CONF +1(98% RPT) LPI/IPV: +290 RK/RG:19%
SCS:2.95, Inbr.C:2.73%, R.Val:19%, Dtr Fert:64

BLACKKADDAR PATIENCE-676698-VG 86(2-10)2*
3 11 305 8848 342 3.9 309 3.5(251 234 266) +54 +31 0
(5 LACT)TOTAL: 43690M/L, 1692F/G, 3.87% 1238P, 3.54%
AVG. BCA/MCR MOY.: 220-206-230P, +23 +4 +10
EBV/VBE: (12/05) -370M/L, -19F/G, -0.09% -1P, +0.10% RPT, 75%
TYPE: (12/05)CONF 0(33% RPT) LPI/IPV: -171 RK/RG:8%
SCS:3.00, Inbr.C:0.49%, R.Val:19%

BONNIE BRAE JAYE-719153-EX 92(4-5)
EBV/VBE: (12/05) -1329M/L, -37F/G, +0.24% -37P, +0.12% RPT, 98%
TYPE: (12/05)CONF +7(95% RPT) LPI/IPV: -310 RK/RG:1%
SCS:2.94, Inbr.C:3.33%, R.Val:11%, Dtr Fert:65

RONDE LIB JELLY-738230-GP 84(2-7)
3 2 305 6506 276 4.2 240 3.7(198 202 222) +13 +20 +28
(4 LACT)TOTAL: 24118M/L, 1036F/G, 4.30% 900P, 3.73%
AVG. BCA/MCR MOY.: 1175-180-197P, -20 -8 -6
EBV/VBE: (12/05) -993M/L, -23F/G, +0.07% -15P, +0.11% RPT, 70%
TYPE: (12/05)CONF +5(47% RPT) LPI/IPV: -290 RK/RG:5%
SCS:3.05, Inbr.C:1.71%, R.Val:19%

YELLOW BRIAR JOLLY-10030863-EX 93(6-9)

2 10 305 8336 339 4.0 287 3.5(261 251 276) +46 +40 +64
4 10 305 8761 338 3.9 296 3.4(233 224 245) +29 +10 +39
6 7 281 10744 408 3.8 356 3.3(271 253 272) Projected
(3 LACT)TOTAL: 29841M/L, 1172F/G, 3.93% 1020P, 3.42%
AVG. BCA/MCR MOY.: 250-238-261P, +38 +25 +52
EBV/VBE: (12/05) +623M/L, +23F/G, -0.03% +33P, +0.14% RPT, 60%
TYPE: (12/05)CONF+11(41% RPT) LPI/IPV: +1567 RK/RG:97%
SCS:2.89, Inbr.C:5.35%, R.Val:14%
RESERVE ALL ONTARIO & ALL CANADIAN NOMINEE 4 YEAR OLD 2003
1ST SR. 2 YEAR OLD & GRAND CHAMP. WORLD DAIRY EXPO & RAWP 2001
1ST SENIOR 2 YEAR OLD & GRAND CHAMPION WESTERN ONTARIO SHOW 2001
JUNIOR CHAMPION ROYAL WINTER FAIR & WESTERN ONTARIO SHOW 2000
1ST SENIOR YEARLING & RESERVE JUNIOR CHAMPION WORLD DAIRY EXPO
ALL CANADIAN 1999, 2000, 2001
ALL ONTARIO 1999, 2000, 2001
1ST SENIOR CALF & RESERVE JUNIOR CHAMPION WORLD DAIRY EXPO 1999
1ST SENIOR CALF ROYAL WINTER FAIR 1999

LABRIE JEANNOT WILMA-747824-EX 90(6-1)16*
3 3 305 13301 489 3.7 457 3.4(398 354 415) +183+141+189
4 5 305 12947 512 4.0 441 3.4(360 346 374) +136+126+140
6 7 305 14286 615 4.3 496 3.5(348 368 367) +119+141+134
8 8 305 15082 617 4.1 481 3.2(361 369 351) +132+147+120
11 10 302 13145 575 4.4 399 3.0(333 369 307) %
(6 LACT)TOTAL: 84846M/L, 3443F/G, 4.06% 2860P, 3.37%
AVG. BCA/MCR MOY.: 349-348-357P, +112 +107 +117
EBV/VBE: (12/05) +605M/L, +15F/G, -0.12% +26P, +0.08% RPT, 83%
TYPE: (12/05)CONF 0(73% RPT) LPI/IPV: +375 RK/RG:37%
SCS:3.02, Inbr.C:0.00%, R.Val:10%
IERE 2 ANS & MENTION HONORABLE KAMOURASKA 1989

BLACKKADDAR M M PATRICK-769262-VG 85(2-1)+ELITE+
EBV/VBE: (12/05) +650M/L, +21F/G, -0.06% +32P, +0.14% RPT, 98%
TYPE: (12/05)CONF +7(96% RPT) LPI/IPV: +1089 RK/RG:66%
SCS:2.75, Inbr.C:4.90%, R.Val:17%, Dtr Fert:57
388 prog class 26 EX, 98 VG/TB, 183 GP/BB, 71 G/B, 5 F
5 P, GP+/BP+ 79%

YELLOW BRIAR B J JACALYN-781108-VG 86(3-2)3*
2 9 305 7506 308 4.1 259 3.5(238 235 249) +43 +45 +50
3 9 305 7649 301 3.9 260 3.4(219 209 226) +21 +23 +25
5 10 266 7513 324 4.3 258 3.4(199 210 208) +1 +18 +5
7 0 305 7910 319 4.0 271 3.4(200 197 208) -18 -15 -15
(6 LACT)TOTAL: 42378M/L, 1740F/G, 4.11% 1459P, 3.44%
AVG. BCA/MCR MOY.: 211-209-220P, +10 +16 +15
EBV/VBE: (12/05) -8M/L, +6E/G, +0.05% +4P, +0.03% RPT, 67%
TYPE: (12/05)CONF +9(49% RPT) LPI/IPV: +795 RK/RG:68%
SCS:2.81, Inbr.C:8.90%, R.Val:10%
3 SENIOR YEARLING ROYAL TORONTO 1993
1 SENIOR CALF & JUNIOR CHAMPION ONTARIO SPRING SHOW 1992