

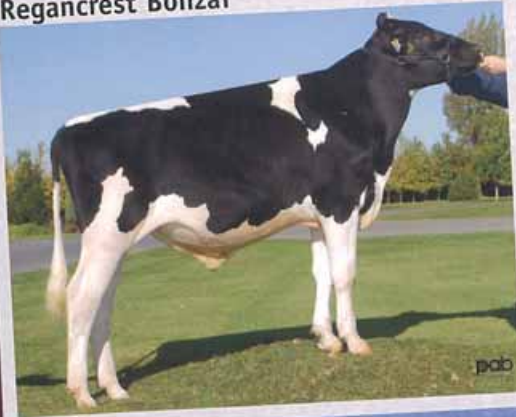
Voici...

BONZAI

(Dundee x PR Barbie)

Série Designer

200H05563
Regancrest Bonzai

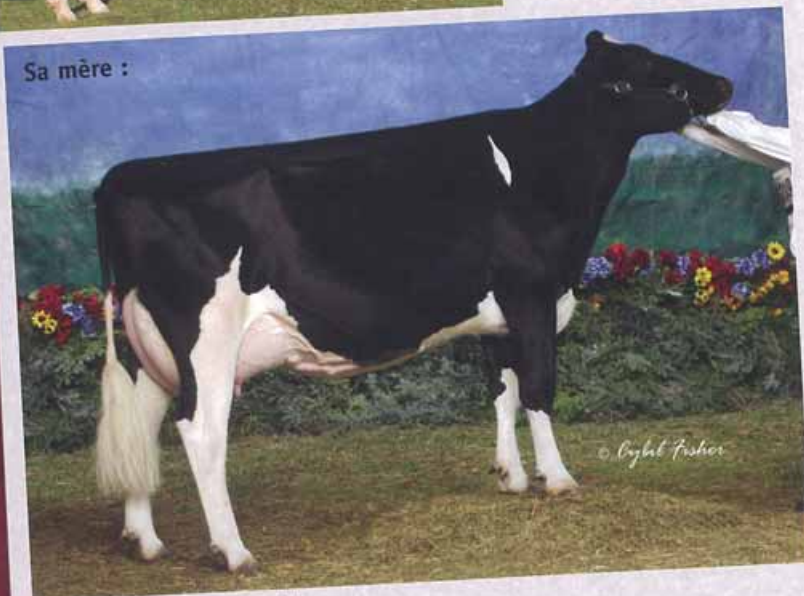


Né le 27 juillet 2005
N° enr. : USAM61898342
Père : Regancrest Dundee



Non admissible
aux mesures
incitatives
du programme
d'épreuves

Sa mère :



Regancrest-PR Barbie

TB-89-4A-ÉU MÉ

2-06 305j 12 120L 3,9% 478G 3,3% 401P kg

Nomination All-American 3 ans junior 2004
Championne Intermédiaire & Grande Championne de réserve,
Minnesota State Fair 2004

Aussi mère de :

Regancrest Stormatic Lyn TB-85-2A-ÉU
2-01 365 15 088L 3,6% 531G 3,1% 459P kg
Regancrest Mrcant Barbie TB-88-EX-SM-2A-ÉU
2-01 365 14 124L 3,3% 471G 2,9% 406P kg
Regancrest Throne Brandi TB-86-2A-ÉU
2-03 313 12 791L 3,6% 447G 3,3% 420P kg inc.

Soeur de Bonzai



Regancrest Cinderella TB-88-2A-ÉU

2-05 196j 7 342L 4,3% 318G 3,2% 216P kg inc.
1^{er} 2 ans senior Mideast Fall National Show 2006
7^e 2 ans senior et Mérite génétique, World Dairy Expo 2006

2^e mère

Regancrest Juror Briana EX-92-4A-ÉU
4-04 305j 15 772L 3,6% 665G 3,0% 469P kg

3^e mère

Regancrest Aerostar Bert EX-90-5A-ÉU MO MÉ
5-02 305j 14 624L 3,6% 530G 3,2% 467P kg

4^e mère

Regancrest Mark Chairman Bea EX-91-2E-ÉU MO MÉ
6-00 305j 13 454L 3,9% 529G 3,0% 409P kg

5^e mère

Regancrest Board Chairman Bea EX-90-6A-ÉU
5-09 305j 10 709L 4,1% 435G 3,4% 362P kg

6^e mère

Regancrest Apache Standout Bea TB-86-7A-ÉU



130 Stone Road West
Guelph, Ontario N1G 3Z2
Tél. : (519) 821-5060
Télééc. : (519) 821-7225
www.semex.com info@semex.com

3450, rue Sicotte, C.P. 518,
Saint-Hyacinthe, Québec
Canada J2S 7B8
Tél. : (450) 774-1141
Télééc. : (450) 774-9318
www.ciaq.com infociaq@ciaq.com



**REGANCREST BONZAI-ET**

HOUSAM61898342 *CVF ET GT B:2005 Jul 27
 CAN-EBV-PA Feb*07 LPI+1302
 KG M+1042 F+15 %F-0.24
 SCS 3.04 P+38 %P+0.04
 CAN-EBV-PA Feb*07 Conf+17
 MS+11 F&L+6 DS+9 R+6

Prepared for:
 THE SEMEX ALLIANCE
 GUELPH ON
 Tel: 519-821-5060

4th- 6th Maternal Dam
 REGANCREST MARK CHAIRMAN BEA EX-91-2E-USA
 REGANCREST BOARD CHAIRMAN BEA EX-90-6YR-USA
 REGANCREST APACHE STANDOUT BEA VG-86-7YR-USA

REGANCREST DUNDEE-ET

HOUSAM127640114 *BLF*CVF ET GT
 EX-95-6YR-USA ST'04
 CAN-EBV Feb*07 98%Rel LPI+1191/90%
 KG M+708/54% F+6/32% %F-0.19
 SCS 3.15 P+28/63% %P+0.04
 CAN-EBV Feb*07 97%Rel Conf+15/99%
 MS+14 F&L+7 DS+11 R+7
 Progeny Data: 935 Daus: 81% GP+
 6EX 212VG 539GP 169G 9F
 867 DAUS ME AVG: 11103 398 3.6 350 3.2
 AVG BCA: M209 F203 P208

MARCREST ENCORE

HOUSAM2048702 *BLF*CVF GT
 EX-96-9YR-USA GM
 MACE-EBV Feb*07 95%Rel MLPI-79
 KG M-150 F-12 %F-0.07 P-7 %P-0.02
 MACE-EBV Feb*07 90%Rel Conf+10

SNOW-N DENISES DELLIA

HOUSAF12895802 *BLF*CVF GT
 EX-95-2E-USA GMD DOM 5*(0/25)
 07-06 305 14166 572 4.0 438 3.1
 365 16153 649 4.0 500 3.1
 4 LACT: 81757 3224 3.9 2751 3.4 KG

HANOVERHILL STARBUCK

HOCANM352790 *BLF*CVF GT
 EX-CAN EXTRA'85
VAN-VLIET OAKIE PRES ELLBANK
 HOUSAF11316154
 EX-90-2E-USA DOM

WALKWAY CHIEF MARK

HOUSAM1773417 *BLF*DPF GT
 VG-87-USA GM'91 SP'96

SNOW-N DORYS DENISE

HOUSAF11768236
 EX-90-2E-USA GMD DOM

REGANCREST-PR BARBIE-ET

HOUSAF60602011 *CVF ET B:2001 Jul 24
 VG-89-4YR-USA DOM
 USA-PTA Feb*07 65%Rel CTPI+1799
 LB M+1051 F+19 %F-0.07
 P+36 %P+0.02
 USA-PTA Feb*07 68%Rel Conf+3.42
 02-06 305 12120 478 3.9 401 3.3
 365 14374 561 3.9 476 3.3
 1 LACT: 21913 838 3.8 747 3.4 KG
 NOM. ALL-AMERICAN JR.3-YR 2004

REGANCREST ELTON DURHAM-ET

HOUSAM2250783 *CVC*BLF*RF ET GT
 EX-90-7YR-USA GM
 MACE-EBV Feb*07 96%Rel MLPI+1444
 KG M+802 F-14 %F-0.45 P+40 %P+0.15
 MACE-EBV Feb*07 94%Rel Conf+16

REGANCREST JUROR BRINA-ET

HOUSAF17014963 ET
 EX-92-4YR-USA
 02-06 305 11662 414 3.5 358 3.1
 04-04 305 15772 574 3.6 469 3.0
 365 18434 670 3.6 552 3.0
 2 LACT: 43373 1579 3.6 1360 3.1 KG

EMPRISE BELL ELTON

HOUSAM1912270 *BLC*CVC*DPF GT
 EX-95-11YR-USA SP'98

SNOW-N DENISES DELLIA

HOUSAF12895802 *BLF*CVF GT
 EX-95-2E-USA GMD DOM 5*(0/25)

KED JUROR-ET

HOUSAM2124357 *BLF*CVF*DPF ET GT
 GP-82-10YR-USA GM ST'98

REGANCREST AEROSTAR BERT-ET

HOUSAF14481642 ET
 EX-90-5YR-USA DOM GMD
 05-02 305 14624 530 3.6 467 3.2
 365 17141 616 3.6 551 3.2
 4 LACT: 49601 1828 3.7 1613 3.3 KG