

Newly-Proven Sires

	LPI	Conf.	Milk kg	Fat kg	Prot. kg	Price
January 2010						
HOLSTEIN						
OMANNY, VG 200 HO 422 OMan x Allen	2109	8	923	43	48	\$35
PROMAR, VG 200 HO 3422 BW Marshall x Rudolph	1529	11	1488	14	38	\$35
LEXACT, VG 200 HO 5451 Export x Income	1708	9	803	42	40	\$28
AYRSHIRE						
OBLIQUE, Ex. 200 AY 329 Tornade x Sylvester	2424	10	843	54	31	\$45
PERCY, GP 200 AY 622 Kelli x Patrick	1975	-1	1616	62	56	\$25
JERSEY						
MINISTER, Ex. 200 JE 427 Jade x Fillpail	886	13	-645	-6	-16	\$35
BROWN SWISS						
GOLDMINE, VG 200 BS 406 Dynasty x Dalton	891	8	128	2	13	\$25

Average Gains in LPI Reliability Using Genomics

Reliability indexes of Canadian genomic evaluations have increased in January 2010 compared to the August 2009 evaluations. These increases are due to changes in the calculation of reliability levels and the increase in the number of proven sires used to determine the genomic evaluations. The chart below is a comparison of the gains in reliability when GLPI is used (January 2010) and when traditional LPI is used (before August 2009).

Reliability Gains with GLPI vs. Traditional LPI January 2010			
Groups of Subjects	% of Average Reliability		
	Without Genomics	With Genomics	Gain
Young sires born between 2007-2009	34	61	27
Proven sires in Canada	86	89	3
Foreign sires with a <i>MACE</i> evaluation in Canada	70	80	10

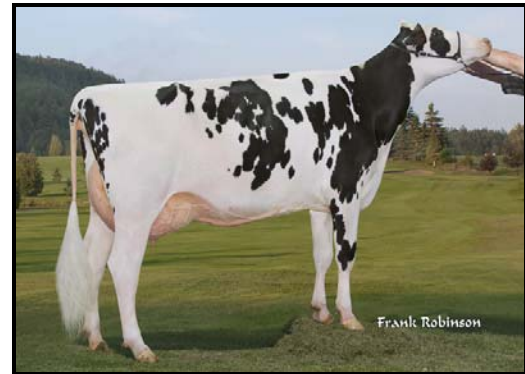


Morsan OMANNY, VG 200 HO 422

OMan x Allen x Rudolph x Astre

Proven in January, OMANNY is a good representative of the breed's new trends. He is a functional trait specialist, while his daughters show very desirable conformation and production qualities. With a very complementary sire-stack, it is not surprising that he is one of the best OMan sons for conformation (+8) and feet and legs (+8). He is strong in production (43 kgF and 48 kgP) and, having positive deviations, he improves profitability.

Don't you want a high-producing, long-lasting cow with exemplary functional traits? OMANNY will help you develop this kind of cow!



Starblue Omanny Placidia, GP83-2Y

1-10 305 12 524 kg 3,6 % 2,9 %P (339-326-313) proj.
Ferme Yvon Lévesque & Fils S.E.N.C., Saint-Gabriel-de-Rimouski

On Special

200 HO 393 Rietben **Tee Off** \$42
777 HO 7321 Magor **Baroque** Allen ET \$35

Sexed semen available from your representative

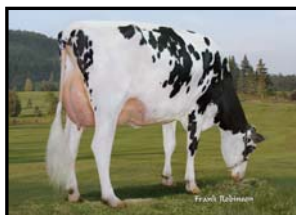
From January 13 to April 5, 2010

Proof Highlights

— Holstein —

New Sires Bring Variety!

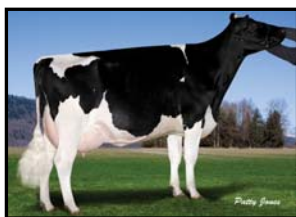
CIAQ's list of proven sires offers more variety than ever with the arrival of three new proven sires with different pedigrees and traits that will please various types of producers: Morsan **Omanny** (OMan x Allen), Comestar **Lexact** (Export x Income) and Windy-Knoll-View **Promar** (BW Marshall x Rudolph). Our proof sheet now combines 29 sires, each with very different appealing traits drawn from 17 different sires. The new leader of the August proof round, **Manifold**, retains his title thanks to important gains. Many veterans maintain their appeal, namely Ashlar, always among the best, who ranks 5th in LPI, while **Mr Burns**, in spite of the customary January rolling base adjustments, remains practically unchanged with the addition of a few second-generation daughters. This year, the base change is at 144 points for LPI.



Starblue Omanny Placidia, GP83-2Y
1-10 305 12 524 kg 3,6 % 2,9 %P
(339-326-313) proj.
Ferme Yvon Lévesque & Fils S.E.N.C.,
Saint-Gabriel-de-Rimouski

Morsan **Omanny**, is the best young graduate of the round, ranking 9th in Canada with 2109 for LPI. Adding to desirable production, **Omanny** shares the best conformation index among OMan sons (+8), and is by far his best for feet and legs, while maintaining excellent functional traits.

Among the newly-proven sires, Comestar **Lexact** brings a very well-balanced profile. Breeders who valued Export daughters will not be disappointed with his best son as he has kept his father's traits: positive deviations, balanced conformation and outstanding health traits, such as herd life at 108 and daughter fertility at 103.



Locarno Lexact 691
2-0 305 10 217 kg 4,0 % 3,1 %
(266-288-260) proj.
Locarno Farms Ltd., Abbotsford, B-C.

Windy Knoll View **Promar** (BW Marshall x Rudolph) brings an attractive profile, particularly in conformation at +11, mammary system at +10 and dairy strength at +12. **Promar** also brings strong indexes for herd life, at 105, daughter fertility, at 104, and semen fertility, at 66.



Lanehaven Promar Tams, GP83-2Y
Bloetjes Farms Ltd., Dorchester, Ontario

— Ayrshire —

Proof after proof our group of Ayrshire sires continue to prevail with their high-genetic potential and stability.

Poker still tops the breed in conformation and **Humour** prevails in daughter fertility with his first official proof for this trait. The most popular sire in recent months, **Reality**, maintains his superior profile and tops the breed for mammary systems.

Jelyca **Oblique** (Tornado x Sylvester) comes with a genetic evaluation dreams are made of! His daughters stand out with their high-fat productions and superior conformation (+10). The exceptional quality of their feet and legs makes **Oblique** the leader in the breed with an index of +17 for this trait. **Oblique** meets breed objectives for improving daughter fertility (105), while being superior in all functional traits.



Des Vignolas Lory, VG-2Y
Ferme des Vignolas enr., Plessisville,
Québec

Kildare **Percy** (Kelli X Patrick) also makes a remarkable entrance with unequalled production indexes, +1616 KgM, +62 KgF and +56 KgP, making him the top Canadian sire for production. His very fertile daughters have wide chests and are endowed with mammary systems with good suspensory ligaments.

Consult our sire line-up on our Website :
www.ciaq.com.

Send us your e-mail address to receive our
proof sheets faster: infociaq@ciaq.com.

Proof Highlights (cont'd)

— Jersey —

Legacy reclaims his title as no. 1 in the breed, ahead of **On Time** and **Dice Advice**, **Blackstone**, **Flow**, **Senior** and **Big Show** complete our list of superior sires over 1000 for LPI.

Select-Scott **Minister** ET (Jade X Fillpail) debuts on our proof sheet as a show cow specialist. His indexes are above +10 of many traits, +13 conf, +11 MS, +13 F&L, +11 DS and +10 R, confirming his uncontested leader status. Although better used on productive cows, he also brings very desirable potential in functional traits.



Pine Haven SSM Marmie, Ex.91-USA
Berlesque Jerseys, Edgerton,
Wisconsin, USA

— Brown Swiss —

Wurl, a bull from Swissgenetics, is the most improved Brown Swiss sire with an increase of 380 points in his LPI.

Goldmine (Dynasty X Dalton) makes his entrance with a very nice first proof in conformation. His very angular and productive daughters stand out due to their quality mammary systems. They have high wide rear udders of soft texture that translate into desirable milking speed.

Changes in the Rolling Base 2010 Vs. 2009

The rolling base, used to express genetic evaluations, is updated each year with the first publication of the sire proofs. In a way, the rolling base reflects the genetic progress of a breed. The chart below shows changes in various important traits. Excluding somatic cell indexes, the negative values represent a desired genetic progress. Many breeds have had a decrease in their daughter fertility, except for the Jersey breed.

	AY	BS	HO	JE
LPI	101	19	144	91
Fat (kg)	1.6	3.5	1.9	1.3
Conformation	.76	.42	.72	.41
CS	-.02	.01	-.03	-.02
Daughter fertility	-.23	-.09	-.30	.24

News

❑ For the Second Year, CIAQ Gives Financial Support for the Installation of the Valacta Trans-D Software

Trans-D enables producers, who use a computerized milking system (except the Boumatic system), to efficiently upload their herd's data (production, events, etc.) to Valacta's central database.

For the second year in a row, CIAQ will give the equivalent of \$250 in credit to clients who will have the software installed in 2010. These clients, however, will have to be eligible to genetic evaluations or undertake the necessary steps to become eligible.

For more information, please contact Melissa Bowers, Communications and Young Sire Proving Program, who will be happy to help you (1-866-737-2427).

❑ Congratulations Master Breeders of 2009!

Michel Roberge, Chesterville
Clovis Holstein inc., Saint-Alexandre
Comestar Holstein, Victoriaville
Nieuwenhof & Associé inc., Sainte-Agnès-de-Dundee
Martin & Renaud Boutin inc., Saint-Georges-Ouest
Ferme du Vieux Saule, Saint-Esprit

Prefix

Androberge
Clovis
Comestar
Larelève
Sartigan
Vieuxsaule

❑ General Meeting of Club Brown Swiss du Québec

Every year at the general meeting, CIAQ rewards the performances of high-producing daughters sired by CIAQ bulls and owned by Quebec producers.

In 2009, the trophy went to **Gahilet Graham Derek**, a daughter of 200BS402 Arthurst Derek ET, with a combined BCA of 890 (323M-290F-277P) at age 7. **Gahilet Graham Derek** is owned by Jeannot and Lise Desharnais of Chesterville seen here with Mario Séguin (on the left). Congratulations!



□ CAB Local Meetings



You are invited to attend your local CAB meeting during which many hot topics will be discussed, namely:

- Presentation of the video "Speech of the General Manager"
- New Pep incentives
- Genomics
- Newly-proven sires
- Your CAB AI statistics
- And much more!

For the dates of the meetings, please go to: www.ciaq.com.

A detailed Notice to Attend will also be mailed to you.

Upcoming Events...

Date	Activity
February 3 to 5	Holstein Québec convention Centre de congrès et d'expositions, Lévis
February 5 and 6	Ayrshire Québec convention Hôtel Castel & Spa Confort, Granby
February 19	Jersey Québec annual meeting Hôtel Blanchette, Drummondville
February 27 and 28	AJRQ annual meeting Hôtel Le Président, Sherbrooke
March 4 and 5	Ayrshire Canada annual general meeting Amherst, Nova Scotia
March 25	CP CAB annual general meeting Hôtel Le Dauphin, Drummondville
March 26 and 27	Jersey Canada convention Brantford, Ontario

Female Sexed Semen

Available upon request	Price	LPI
777 AY 329 Oblique	\$65	2424
777 AY 590 Potter	\$55	1254
* 777 AY 601 Ristourn	\$55	1672
777 HO 1584 Frosty	\$52	1847
777 HO 3280 Final Cut	\$55	706
777 HO 3402 Simms	\$52	813
777 HO 4624 Givenchy	\$55	1460
* 777 HO 4779 Buckeye	\$52	1341
777 HO 5139 Bonair	\$60	1563
777 HO 5205 Sapphire	\$48	1387
777 HO 5210 Kingly	\$55	1101
** 777 HO 7321 Baroque PROMOTION	\$35	1222
777 JE 314 Legacy	\$55	1713
777 JE 420 Senior	\$55	1106
777 JE 423 Blackstone	\$55	1206
777 JE 427 Minister	\$55	886
* 777 JE 430 On Time	\$65	1492

* Limited inventory.

** Baroque sexed semen is now available directly from your AI technician or from your farm service representative.

Even More Variety and Progress with Our Genomax Line!



With the second publication of the genomic evaluation results, CIAQ took the opportunity to fine-tune its **Genomax** line. The new list comprises 10 bulls from six different dominant sires with an average LPI of 2285 (GPA) and an index of +13 in conformation. **Ask your representative for Genomax semen and our Genomax sire list.**

		LPI*	Price
200HO5908	Hendel Bigstone -ET Bolton x OMan	2868	\$40
200HO5929	Gen-I-Beq Brawler Baxter x Shottle	2677	\$40
200HO3655	Gillette Why Not Shottle x Blitz	2414	\$40
200HO5630	Comestar Lavanguard Goldwyn x Titanic	2448	\$32
200HO0547	De-Su Burnish -ET Baxter x OMan	2434	\$32
200HO0466	Rockymountain Mackinaw *RDC Shottle x Intensifier	2159	\$32
200HO3685	Greenlea Artie-Red -ET Mr Burns x Regiment	2008	\$32
200HO5643	Regel Beamer -ET Duplex x Stormatic	1676	\$32
200HO5660	Dudoc Radius Shottle x Jolt	2223	\$25
200HO2366	West Port Arron Doon Mitey P *RDC Goldwyn x September	1942	\$25

*Genomic Parent Average (GPA) – CDN, January 2010. Eligible for PEP incentives on semen from proven sires.

Genomax in



Since the August 2009 genetic evaluations, Genomax sires can be added to your ProGen report. As many of you have asked us to include these sires in your ProGen report, we have decided to add them to ALL Holstein herd reports. We have identified Genomax sires with the sign "G*" before their names in the report you will be receiving shortly. If you wish to make changes to your sire group, or if you wish to have your ProGen report personalized in any way, do not hesitate to contact your representative or any member of the CIAQ Service Development team. We will be happy to help you!